

# TOBACCO SECTOR

Your experts in Track & Trace coding solutions



# Why work with Domino?

Experience the difference by partnering with sector experts who understand your business and challenges

## SOLUTIONS DESIGNED FOR T&T

Our focused approach to the specific requirements of the tobacco industry makes Domino the strategic Track and Trace coding solutions partner to the world's largest tobacco producers and original equipment manufacturers.

## GLOBAL EXPERTS IN THE TOBACCO SECTOR

Domino coding technology is designed to enable manufacturers to comply with legislative requirements such as those in the EU (TPD2), UAE, Russia and those governed by the WHO FCTC Anti-Illicit Trade Protocols.

## FROM PACK TO PALLET


Domino offers total solutions for pack to pallet coding, with easy-to-use, highly-reliable coders and bespoke application parts, to ensure a seamless integration and optimal efficiency.

## PRE- AND POST-INSTALLATION SUPPORT

Domino is industry-recognized for high-quality pre- and post-sales support to help tobacco manufacturers to identify the best solutions for their specific applications, and achieve optimized line productivity.

## LEADERS IN SUSTAINABILITY

Domino is dedicated to promoting sustainable development by aligning the company goals with their customer objectives, and helping manufacturers to reduce their carbon footprint, by minimizing waste, and optimizing production efficiency.

A photograph of two men in a factory or industrial setting. The man on the left is wearing a white dress shirt and a dark striped tie, looking down at a document. The man on the right is wearing a white lab coat over a dark shirt and glasses, also looking at the document. They are standing in front of large industrial equipment. The image has a blue tint.

“In acceptance testing on customer production lines, Domino’s CPCS has recorded OEE figures of 99.999%, proving that a serialized pack coding solution doesn’t have to have a negative impact on production line efficiency. That’s why over 20 systems have been supplied to date, with all the ‘big 4’ MNCs being a customer of the solution.”

**James Cutforth**  
*Global Tobacco Sector Manager  
at Domino Printing Sciences*

# Experts in Track and Trace

Trust Domino for comprehensive and effective tobacco coding solutions

## High-quality codes requires perfect product handling

To comply with Track and Trace (T&T) legislation, tobacco products must have crisp and clear human- and machine-readable codes. High-quality code requirements require precise product handling during coding to ensure correct positioning and avoid product line vibrations that could result in unreadable codes, costly rejects, and waste. Domino has collaborated with industry experts and customers to develop a unique product handling system, specifically designed for T&T. Domino's innovate product handling system guarantees clear and crisp codes every time and serves as the foundation for our **Cigarette Pack Coding Station**.

Many cigarette packaging machines were not designed to comply with T&T regulations. Installing multiple sub-systems to help ensure compliance can be problematic and even impact production efficiency. Domino has taken two steps to provide tobacco coding systems to comply with T&T regulations: Our specialized coding solutions combine coding, product handling, code validation, and rejection in one single, turn-key-system, meaning they're easy to integrate, with a small overall footprint. In addition, we've developed the Domino **TLS** for bundles and cartons, which can increase your current OEE by 5%, while limiting downtime due to labeling.





## Specialized Solutions for T&T

### Cigarette Pack Coding Station

Domino has designed the **Cigarette Pack Coding Station (CPCS)** as a turnkey solution for manufacturers with unique product identification and track and trace requirements. The system is capable of coding on both soft and hard packs with human- and machine-readable codes at speeds of up to 500ppm.

### Twin Labeling Station

The Domino **TLS** can increase OEE by up to 5% by reducing stoppages. The Domino **TLS** system automatically and seamlessly switches from one printer to another without stopping the line. The impact of planned and unplanned stoppages, consumable changes, maintenance, or breakdowns is minimized.



**LEARN MORE ABOUT OUR SOLUTIONS FOR THE TOBACCO SECTOR**

# A Solution for Each Substrate

From pack and pouch to carton and case, Domino has the technology to suit your needs



## Tins and Pouches

CO2 and fiber lasers coders can easily mark metals or hard plastics. If you use labels, they can be coded before or after application.



## Cigars and Cigarillos

Domino can help you to comply with relevant legislation such as the EU TPD & WHO FCTC, protecting your brand reputation.



## Vape Equipment

Our printers produce pin-sharp text, graphics, and 2D codes on a variety of packaging materials.



## End of the Line - Pallets and Cases

With our range of pallet and case labelers, Domino can deliver a robust, flexible, and automated solution for the final step of your production process. Printing and applying one or multiple labels, with clear, legible information to ensure products be handled efficiently on the way to its destination, with total traceability from the factory to the final user.





## Cigarette Packs

The **CPCS** uses a laser coder to etch human- and machine-readable codes on both soft and hard cigarette packs at up to 500ppm.



## Bundles and Cartons

The **TLS** is the ideal choice for manufacturers that aim to maximize their line efficiency. Thermal inkjet solutions can also be used for marking cartons.



## Cases

Domino offers a range of solutions depending on substrate and print requirements, including print and apply labelers, hi-res inkjet printers, and laser coders.



**LEARN MORE ABOUT OUR PRODUCT PORTFOLIO**

# Where can we help you?

An integrated approach with connected solutions across your whole production line

## 1. EASY-TO-INTEGRATE T&T CODING SOLUTIONS WITH MINIMAL FOOTPRINT

The Domino **CPCS** and **TLS** have been designed to fit into the most demanding layouts and have a small overall footprint for easy integration, minimizing their impact in the production line.

## 2. CHECK AND VALIDATE EVERY SINGLE CODE

With fully integrated vision systems, you'll be able to detect any issues before they have any impact on your production, avoiding the potential costs associated with recalls.

## 4. MONITOR AND OPTIMIZE YOUR CODING PROCESS

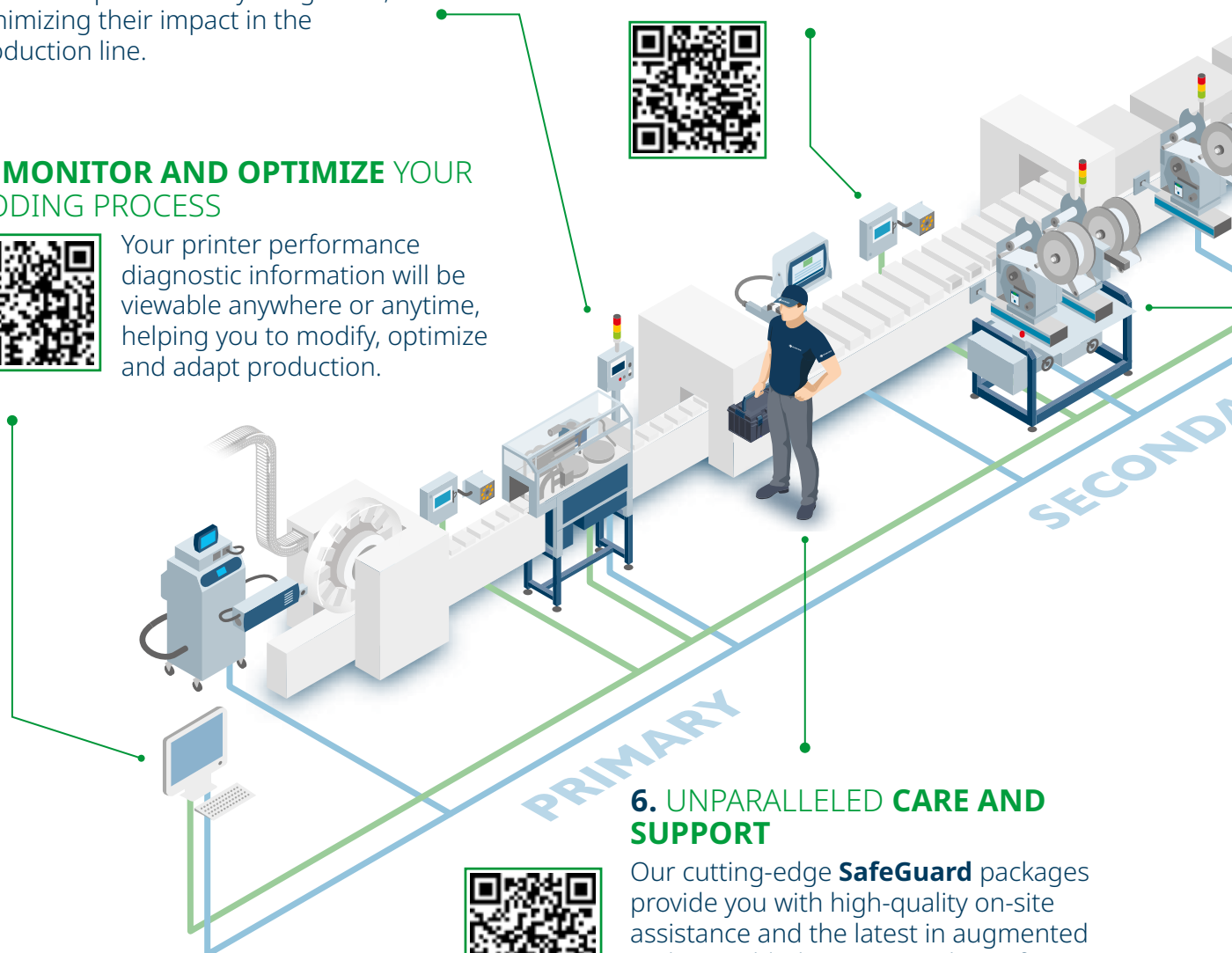


Your printer performance diagnostic information will be viewable anywhere or anytime, helping you to modify, optimize and adapt production.

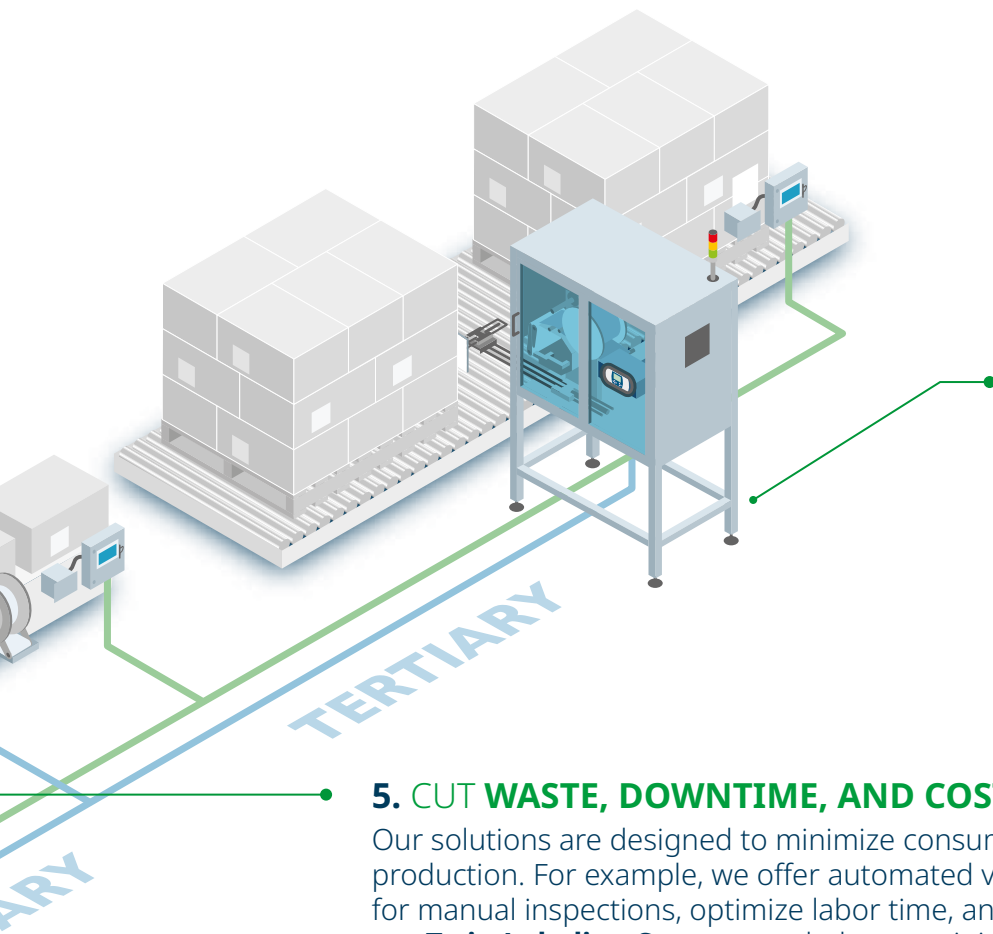
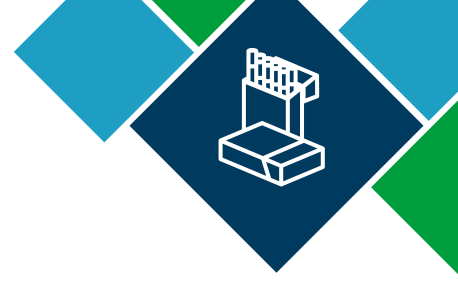


## 6. UNPARALLELED CARE AND SUPPORT

Our cutting-edge **SafeGuard** packages provide you with high-quality on-site assistance and the latest in augmented reality-enabled remote guidance from our expert engineers.







### 3. ASSURED AGGREGATION AND TRACEABILITY FROM PRODUCT TO PALLET

Domino offers coding solutions for all the packaging tiers, from product to pallet, including software and code validation.

### 5. CUT WASTE, DOWNTIME, AND COSTS

Our solutions are designed to minimize consumable usage while optimizing production. For example, we offer automated vision systems to reduce the need for manual inspections, optimize labor time, and reduce waste. Or the **TLS**, our **Twin Labeling System** can help you minimize downtime due to labeling, improving your production efficiency.

## PRODUCT HANDLING, CODING, INSPECTION & REJECTION FROM THE SAME PARTNER? THAT SOUNDS LOGICAL

We offer a unique and unparalleled approach in the market that encompasses product handling, printing, inspection, and rejection from a single reliable partner. This facilitates a seamless integration and compatibility with the host OEM equipment. Working with Domino means you can enjoy a single point of contact for your pack coding & inspection.



# Working with Domino

Finding the right solution starts with understanding your needs

To help find the right solution for you, your coding partner should have a clear understanding of your goals. They must work collaboratively with you to understand your requirements and test their solutions against these needs.

At Domino, we have advanced ink and laser samples testing facilities to help us to do just this. Once we have your samples, our coding experts will conduct tests for various technologies taking into account factors including required line speed, type of material, and specific factory conditions. We will propose a solution only after we receive the results and analyze them.

Once the suitable coding technology options have been identified, our team of tobacco sector experts will determine the most appropriate integration options for the host machinery. The OEM machinery used in the tobacco industry is known for its diversity, but our experts have extensive experience in integrating coding equipment with these specialized machines.





## What can you expect when working with us?

### **UNDERSTANDING YOUR NEEDS**

- *You'll set up your goals and priorities, and we will review them together*
- *We'll carry out assessment visits to better understand your needs*
- *You'll always receive a honest and transparent communication*

### **PROPOSAL & PLANNING**

- *We'll use samples and information to find the best solution for your needs*
- *You'll receive a clear proposal with steps, timelines, and transparent cost breakdown*
- *We'll review and approve the solution together*

### **IMPLEMENTATION**

- *We'll test each printer with your configuration in our labs before shipping*
- *Your team will be trained to maximize the efficiency of your new system*
- *We won't sign off on the solution until we have fully implemented and tested it*

### **OPTIMIZATION & AFTER-CARE**

- *Our Customer Success teams will strive to make sure that the solution lives up to our commitments, and you maximize the return on your investment*
- *We'll monitor and service your solution to optimize its efficiency*
- *You'll be able choose the level of support you need*

# Services and Aftermarket

Commitment to ensuring your peace of mind



## Global Sales and Support

With 25 subsidiaries and over 200 distributors in more than 120 countries, we offer extensive customer support wherever you are.

## Service and Warranty Agreements

Predictability of lifetime costs via a range of globally consistent service, support, and warranty agreements tailored to your needs.

## Consumables

Fully comprehensive range of consumables to ensure optimum performance at customer site and 24-hr online ordering [www.buydomino.com](http://www.buydomino.com)

## Training

Commitment to new user, refresher, and update training available locally, online, and at Domino's Training Academy



**LEARN MORE ABOUT OUR AFTERMARKET & SERVICES PORTFOLIO**

"We seek partnerships...not simple supplier-customer relations. For this reason, we decided to install technology from Domino, which brings us robustness and reliability."



**LEARN MORE  
ABOUT THIS CASE  
STUDY HERE**

**Rui Ramos**  
*Production Manager at Sovena Group*

"We approached several different coding and marking suppliers with the brief, and Domino stood out as the only supplier dedicated to working truly collaboratively with us to find the most appropriate design and solution."



**LEARN MORE  
ABOUT THIS CASE  
STUDY HERE**

**Kevin Higgins**  
*Beauty and Care Engineering Director  
at P&G*

"Line efficiency is improved; cost of production has been reduced, and customer complaints about proof printing quality have been reduced."



**LEARN MORE  
ABOUT THIS CASE  
STUDY HERE**

**Sabri Kundakcioglu**  
*Vice President of Engineering  
at Pepsi Bottling Ventures*

# Our sustainability commitment

Domino supports the UN Sustainable Development Goals. We strongly believe that corporate responsibility is integral to business success, and we are firmly committed to the welfare of our stakeholders, including our communities, employees, environment, value chain, and partners. Domino acts on corporate social responsibility through 4 main pillars:



## ENVIRONMENT

Domino is committed to protecting the environment by reducing its environmental impact.



## PEOPLE

Domino is committed to ensuring compliance with human rights and working conditions, developing a great working environment for its employees to thrive and develop as well as promoting diversity across the organization.



## SOCIETY

Domino wants to give back and have a positive impact in the local communities in which it operates. Domino also supports the development of our current and future generations through education.



## CUSTOMER

In parallel to making Domino a more sustainable organization Domino aims to partner with its customers to develop and offer solutions that support our customers' sustainability ambitions.



**LEARN MORE ABOUT OUR  
COMMITMENT, GOALS, AND APPROACH  
TO SUSTAINABILITY**



## NEW MATERIALS

We offer comprehensive support to customers who are interested in adopting new, environmentally friendly packaging materials. Our labs are available for testing different coding technologies, to help ensure, beforehand, that their use will not impact production line efficiency.



## LATE-STAGE CUSTOMIZATION

Leveraging our expertise in high-resolution printing and laser technology, we have developed on-site late stage customization solutions. These solutions help eliminating the need for additional layers of packaging and labels, reducing costs, minimizing waste, and simplifying the supply chain.

## LOW-IMPACT INKS

We are constantly exploring and innovating to create new consumables that are more efficient and have a lesser impact on the environment. As an example, we have introduced MEK-free inks that considerably reduce volatile organic compound (VOC) emissions while ensuring excellent adhesion, even on challenging substrates.



# Learn more about us



## Domino and the Tobacco Sector



## Cigarette Pack Coding Station



## Twin Labeling Station



CONTACT US

TALK TO AN EXPERT

800.444.4512

[solutions@domino-na.com](mailto:solutions@domino-na.com)

[www.domino-na.com/contact](http://www.domino-na.com/contact)