

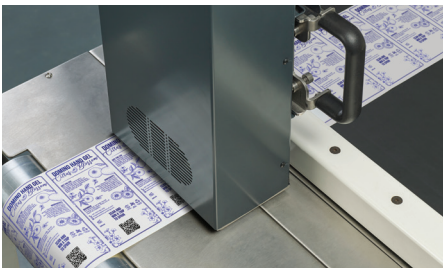
K300, Fast, Smart and Reliable

The Perfect High Resolution Solution for Variable Data Printing

The **K300** digital printer has been developed to be versatile and provide high quality printing in a variety of applications.

The 600 dpi high-resolution monochrome variable data printing capabilities are ideal for late stage customisation for coding and marking applications, 2D coding, and can be included in-line to the production process if required.

The **K300** is a new platform, building on the legacy of the Domino **K-Series**, with advanced high speed architecture to support the very latest print engine technology.



A wide range of applications

The **K300** can be used for late stage customisation on the production line, applied directly to the product, or overprinting pre-printed material and allows for greater flexibility to the production process.

- ◆ Web applications (labels, forms, tickets)
- ◆ Sheet applications (codes on stamps, plastic cards, security products, late-stage personalization, transactional print)
- ◆ High-Speed mailing applications (addressing, personalizing magazines, cards, letters, envelopes, postal voting)
- ◆ Tag Printing, Barcode Printing (including QR Codes)

Fast

With speeds of up to 250 metres per minute, the **K300** is ideal for adding unique codes and batch information to pre-printed materials, reducing the need for stock holding of packaging and enabling short run, short lead time demands to be met cost effectively.

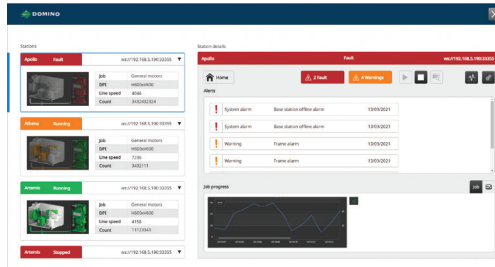
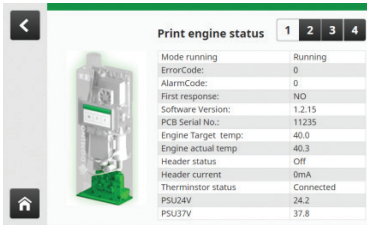
- ◆ Rapid Startup: Less than 1 minute warm start time possible with 'Printer Sleep Mode' also available
- ◆ 125 m/min at 600 dpi and 250m/min for 300 dpi

Flexible

- ◆ 54.1mm width with 1 print station or 108.2mm with 2 print stations for multihead applications
- ◆ Flexible controller options available from simple stand-alone operation or OEM system integration through to multi-head installations
- ◆ Advanced data and process management

www.domino-printing.com

A powerful and versatile digital coding solution



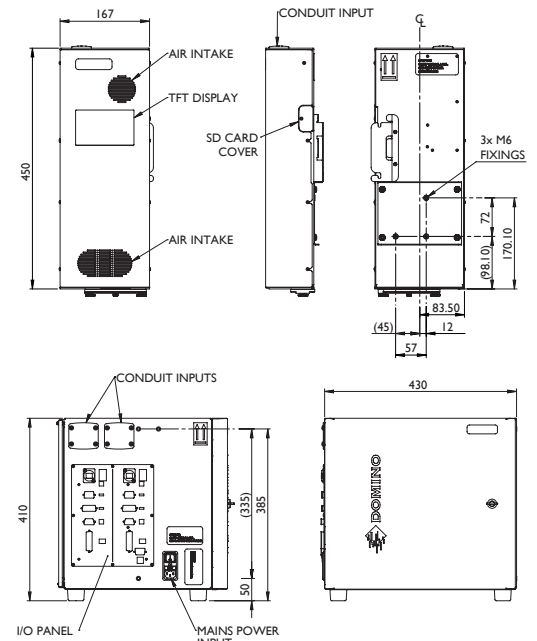
Smart User Interface

The system has two points of user interface. The 5" colour TFT touchscreen included in the Print Station is simple and intuitive to use for day-to-day operation and system status. The companion **QuickStep K** is a Windows based application used for configuration, diagnostics and can be used for managing multiple print heads in more complex installations.

Technical Outline Specifications

| SECTION | PARAMETER | K300 |
|--|--------------------------|---|
| PRINT SPECIFICATION | Print Station: | 1x1280 channels (per Print Station) |
| | Print Width: | 54.1mm or 108.2mm with 2 print stations |
| | Optimum Throw Distance: | 1-3mm |
| | Maximum line speed: | 250m/min (4.2m/s) at 600 x 300 dpi 125m/min (2.1m/s) at 600 x 600 dpi |
| | Resolution: | 600 dpi across head perpendicular to product movement 300, 600, 900 and 1,200 dpi parallel to product movement |
| | Fonts: | Any True Type (unless onboard render mode) |
| | Label Creation: | Editor Starlight |
| | Product Detect: | Maximum of 2 per Base Unit |
| | Label Information: | Max SD card storage: 1000 labels 288-character variable data per label |
| | Element Types: | Text graphics Postnet, Planet, IBM, RM, 4State, ITF, EAN128 Data Matrix & QR Codes |
| MECHANICAL SPECIFICATION | Dimensions: | Base Unit: 383mm (H) x 430mm (W) x 340mm (D) Print Station: 450mm (H) x 165mm (W) x 90mm (D) |
| | Weight: | Print Station: 7kg (Approx) Base Station: 19kg (Approx) |
| | Conduit Lengths: | 1.5m, 2.5m or 4.5m |
| ELECTRICAL SUPPLY | Voltage: | 100-240 Vac, 50/60 Hz |
| | Power: | 600W (Maximum) |
| | Fuse: | 6.3A |
| ELECTRONIC SPECIFICATION PER PRINT STATION | Storage: | 1x SD 32GB or equivalent |
| | Display: | 800 x 480 colour TFT per Print Station |
| | Encoders: | 2 Maximum (Differential or Opto) |
| | Connectivity: | Per print station: 1x RS232 1x Ethernet 6 Bit Input (Opto) 6 Bit Output (Opto) |
| ENVIRONMENT | Status: | Maximum loaded labels: 255 |
| | Operational Temperature: | 10-40°C * |
| | Storage Temperature: | 5-30°C |
| | Operational Noise: | <70dB |

* Maximum operational capabilities dependent on the acceptable range for specific ink.



TALK TO AN EXPERT

enquiries@domino-uk.com