



The **N730i** Integration Module

High-performance 1200dpi digital hybrid solution for label printing



Domino. Do more.



Create your preferred hybrid solution with the **N730i**

Built upon Domino's Generation 7 inkjet technology platform, the seven colour **N730i** 1200dpi print engine, equipped with Brother BITSTAR™ printheads, is available as an integration module so you can create your preferred hybrid label press.



Overview

Future-proof your business

Future-proof your investment with the added value of hybrid and bridge the gap between digital and flexo.

Domino's latest Generation 7 platform

All the features of the **N730i** to achieve high impact labels at 1200dpi.

Choose your preferred hybrid solution

Integrate with an OEM partner of your choice, with no constriction in terms of configuration.

Combining digital printing and flexographic processes

The Domino **N730i Integration Module** enables you to merge the exceptional capabilities of digital printing with the robustness of flexographic processes to create a hybrid solution that offers the ultimate in flexibility, efficiency, and quality.

Incorporating all the same cutting-edge technology provided as standard with the **N730i** reel-to-reel label press, the **N730i Integration Module** within a hybrid line, provides the added ability to handle a wider range of applications, achieve higher productivity and meet the diverse demands of your customers with ease.

Key features

Unmatched digital print quality

- ◆ The **N730i Integration Module** utilises the Brother BITSTAR™ 1200dpi piezo printhead technology, delivering ultra high-resolution print quality. Expect sharp text, vibrant colours, and intricate detail with every print run.

High-speed digital printing

- ◆ Print speeds of up to 70 metres per minute for all colours including white, help to ensure that even large jobs are completed swiftly without sacrificing quality, providing significant time and cost savings.

Versatile substrate handling

- ◆ Compatible with a broad range of substrates, making it an excellent choice for printing self-adhesive, shrink sleeve, in-mould, and laminate tube labels. This flexibility allows you to handle diverse label applications across various industries.

Domino-manufactured UV93 ink set

- ◆ Configurable to print up to seven colours, the full CMYKOVW combination makes it possible to achieve 92% of the pantone spectrum and up to 76% white opacity**.

Engineered for outstanding reliability

- ◆ Featuring Domino's **Intelligent Technology (i-Tech)** components, such as **i-Tech NozzleAdjust**, **SetAlign** and **ActiFlow2**, ensuring consistent print quality and minimising maintenance requirements. These technologies enhance overall operational efficiency and reduce downtime.

Advanced digital front end (DFE)

- ◆ The powerful Domino Sunlight GUI and Sunrise DFE provides an intuitive interface for job setup and management, robust data handling, and comprehensive colour management. This ensures precise colour matching, efficient job preparation, and high speed variable data printing' making it ideal for personalised and short, medium and long-run jobs.

Applications

Consumer goods: Create high impact, visually stunning labels that captivate customers.

Pharmaceuticals: Produce compliant, clear, and accurate labels with enhanced security features.

Food & beverage: Deliver durable, high-resolution labels that meet industry standards and food compliance***

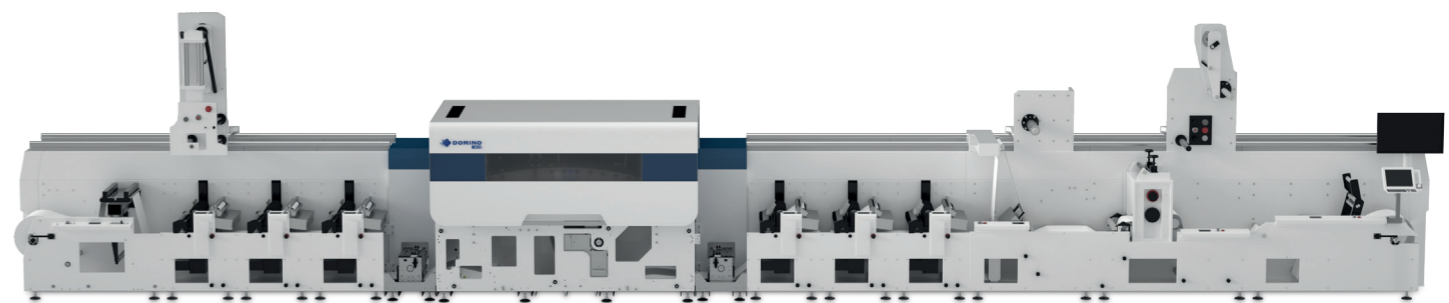
Industrial: Generate resilient labels for challenging environments, ensuring longevity and readability.

The choice is yours

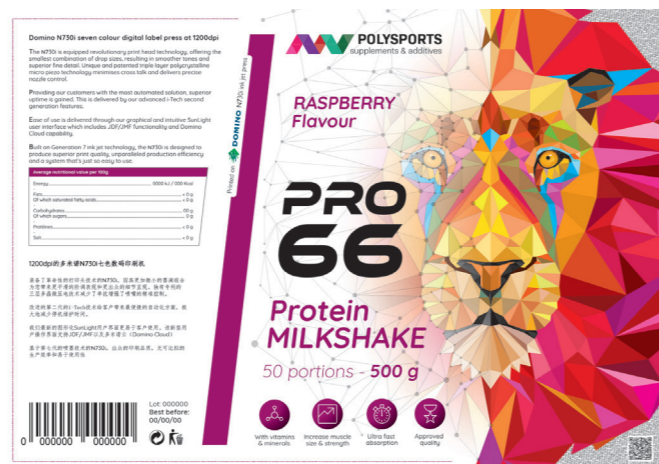
The **N730i Integration Module** can be supplied as part of a fully integrated hybrid press working with your OEM partner of choice.

Include flexographic stations before and after the **N730i Integration Module** for priming, coating, embellishment or other effects to enrich your products further for added value.

Combine with lamination, die-cutting, embossing, punching, slitting, and inspection systems to add value to the printed output, all within a single efficient process offering precision and flexibility of digital printing with the robustness and versatility of flexographic printing.



*Subject to delta E and media specification. **Media dependent. ***Subject to regulations in the given market and when a migration barrier is in place.



Technical specification

N730i Integration Module

Technology	Piezo drop-on-demand inkjet and Brother BITSTAR™ printheads
Printing speed	70m/min (230ft/min)
Image resolution	1200dpi native, including 3 drop sizes
Image formats	340mm (13.4") maximum print width
Web width	170mm (6.7")* to 340mm (13.4")
Media type	Coated and uncoated, supported, and unsupported substrates including paper, white and transparent film, aluminum foil, PP, PE, PVC, PET, BOPP*
Inks	UV93 is available in UV-curable cyan, magenta, yellow, black, orange, violet, and white.
Workflow	Sunrise DFE (in-line ripping available for variable data printing) JDF/JMF Support
Central print module	Anti-static control Up to 7 colour print section UV LED pinning UV curing module Chilled roller Constrast sensor for registration
Dimensions	Height: 1.8m (5.9ft), depth: 1.9m (6.2ft), length: 2.6m (8.5ft)
Weight	Print module: 2300kg (5070lbs) Electronics cabinet(s): 750kg (1654lbs) Ink cabinet(s): 100kg (221lbs) each Flush cabinet: 75kg (165lbs) each
Services	Three phase power – one 380–420V drop Compressed air – one drop at 6–8 bar (90–115psi), clean and dry
Environment	Optimal temperature range 20–22°C (68–72°F) Maximum temperature range 20–25°C (68–77°F) Ink storage 20–25°C (68–77°F) Optimum humidity range 40–60% Dust-controlled environment preferred

*Some validation work may be required



TALK TO AN EXPERT

enquiries@domino-uk.com

+44 1954 782 551

www.domino-printing.com