

K300, Fast, Smart and Reliable

The high-speed, high-res, monochrome digital coding solution

The **K300** has been developed to be a fast and reliable printer that delivers on our customers' needs from day one.

Its 600 DPI High-Resolution variable data printing capabilities are ideal for any 2D Code type in a wide range of applications in different sectors.

The K300 is built on the legacy of the Domino K-Series, with advanced high-speed architecture to support the very latest print engine technology



A wide range of applications

- ◆ Web applications (labels, forms, tickets)
- ◆ Sheet applications (stamps, plastic cards, security products, late-stage personalization, transactional)
- ◆ High-Speed mailing applications (addressing, magazines, cards, letters, envelopes, indicia, postal voting)
- But also: ◆ Tag Printing ◆ Barcode Printing (including QR Codes) ◆ Electronics ◆ Medical Devices ◆ Serial Numbers ◆ Batch Numbers ◆ Random numbers ◆ Variable images ◆ etc.



Fast

- ◆ Rapid startup – 3 minutes cold start at room temperature
- ◆ Designed for full speed operation (50KHz) with the latest generations of print engine technology
- ◆ 120 m/min at 600 DPI and 240m/min for 300 DPI
- ◆ Optimal waveform development for maximum performance



Smart

- ◆ Fully Independent Print-Stations with 1 or 2 per Base Unit (Independent labels, speeds, positions, etc.)
- ◆ Stackable Base Station system for multihead applications
- ◆ Flexible controller options available from simple stand-alone operation or OEM system integration through to multi-head installations
- ◆ Advanced data and process management



Reliable

- ◆ Based on Domino proven technology
- ◆ Integrated thermal and pressure management
- ◆ Very detailed diagnostics (disconnected or failed component detection)
- ◆ Integrated sub-systems minimizes internal connections
- ◆ Fully recirculating and de-gassing ink system

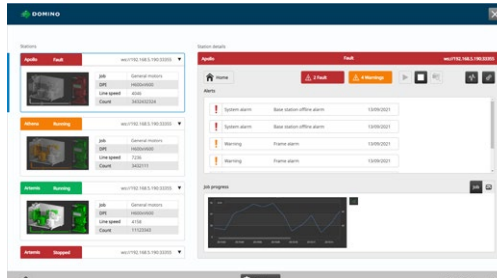
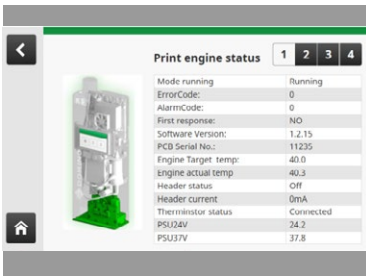
www.domino-printing.com

A powerful and versatile Digital Coding solution



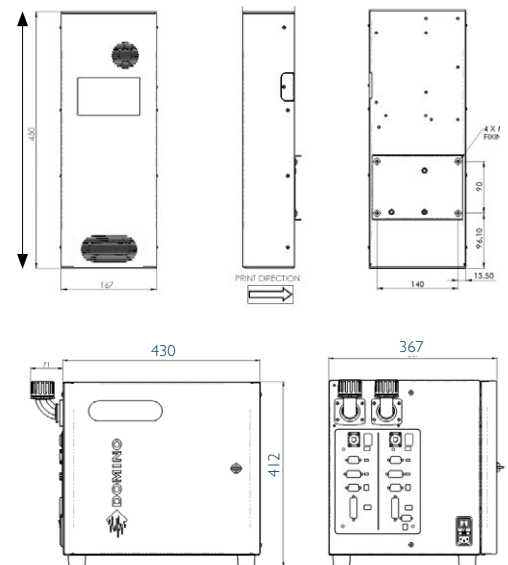
Smart User Interface

The system has two points of user interface. The 5" colour TFT touchscreen included in the Print Station is simple and intuitive to use for day-to-day operation and system status. The companion "QuickStep K" Windows 10 app is used for configuration, diagnostics, label creation and can be used for managing multiple print heads in more complex installations.

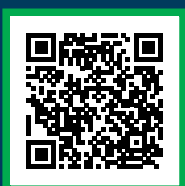
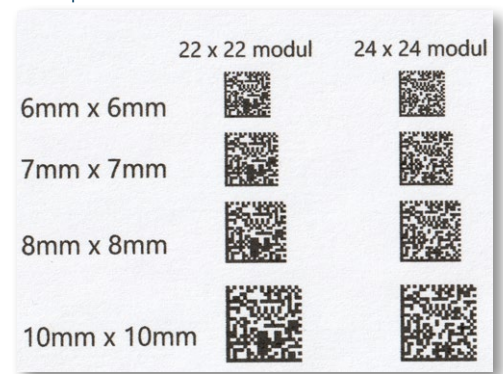


Technical Outline Specifications

| SECTION | PARAMETER | K300 |
|--------------------------|--|--|
| OPERATING ENVIRONMENT | TEMPERATURE | 10°C to 40°C |
| | HUMIDITY | 10 to 85% NON-CONDENSING |
| | ALTITUDE | Up to 2000m |
| ELECTRICAL SUPPLY | VOLTAGE | 100-240 VAC +/-10% SINGLE PHASE |
| | FREQUENCY | 50-60 +/-10% Hz |
| PRINT SPECIFICATION | POWER | 600W |
| | PRINT HEADS | 1 x 1280 CHANNELS (PER PRINT STATION) |
| | PRINT HEIGHT | 54.1mm |
| | MAX LINE SPEED | <ul style="list-style-type: none"> • 240m/min @ 600DPI x 300DPI • 120m/min @ 600DPI x 600DPI |
| | MAX THROUGHPUT | 32 / s (PRINT SIZE & SPEED DEPENDANT) |
| | OPTIMUM THROW DISTANCE | 0.5 - 1.0mm |
| | DESIGNATED INKS | Water based, UV and glycol based inks (1.4L) |
| | DROP SIZE | 10pL (Nominal) |
| | FONTS | Multiple True Type |
| | PRODUCT DETECTS | 2 Max (PER PRINT STATION) |
| | DYNAMIC VARIABLES | ALL STANDARD DATE/TIME CODES |
| | LABEL CREATION | OFFLINE WINDOWS APPLICATION |
| | LABEL INFORMATION | Max STORED LABELS 1000 288 CHARACTERS VARIABLE DATA PER LABEL |
| | ELEMENT TYPES | TEXT GRAPHICS POSTNET, PLANET, IMB, RM 4STATE, ITF, EAN 128 DATA MATRIX, QR CODES |
| | ELECTRONIC SPECIFICATION PER PRINT STATION | STORAGE |
| DISPLAY | | 800 x 480 COLOUR TFT |
| ENCODERS | | DIFFERENTIAL or OPTO |
| CONNECTIVITY | | <ul style="list-style-type: none"> • 1 x RS232 • 1 x Ethernet • 6 Bit input Opto isolated • 6 Bit Output Opto isolated |
| MECHANICAL SPECIFICATION | STATUS | Max STORED LABELS 1000 |
| | MASS | <ul style="list-style-type: none"> • Base Unit: 18.5kg • Print Station: 6.5kg each |
| | MAX UMBILICAL LENGTH | 4.5 m |
| | FACTORY AIR | NOT REQUIRED |
| | SEALING CAP | 1 PER PRINT STATION |



Samples



TALK TO AN EXPERT

enquiries@domino-uk.com